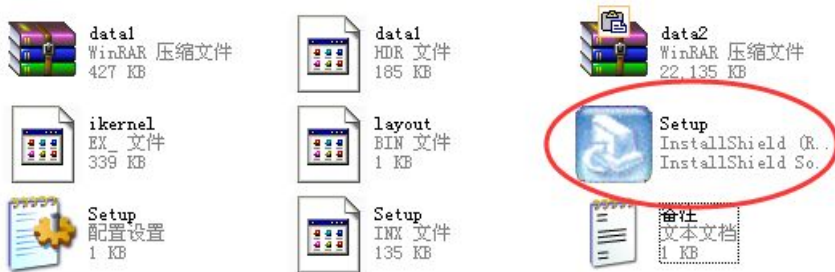
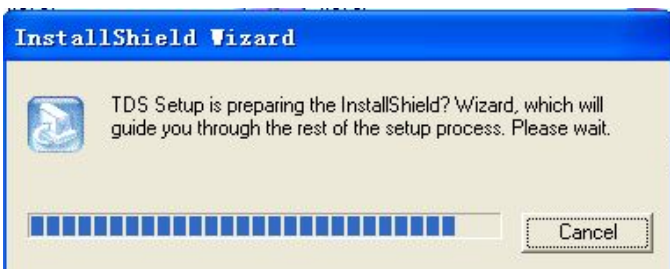


工艺单软件安装说明

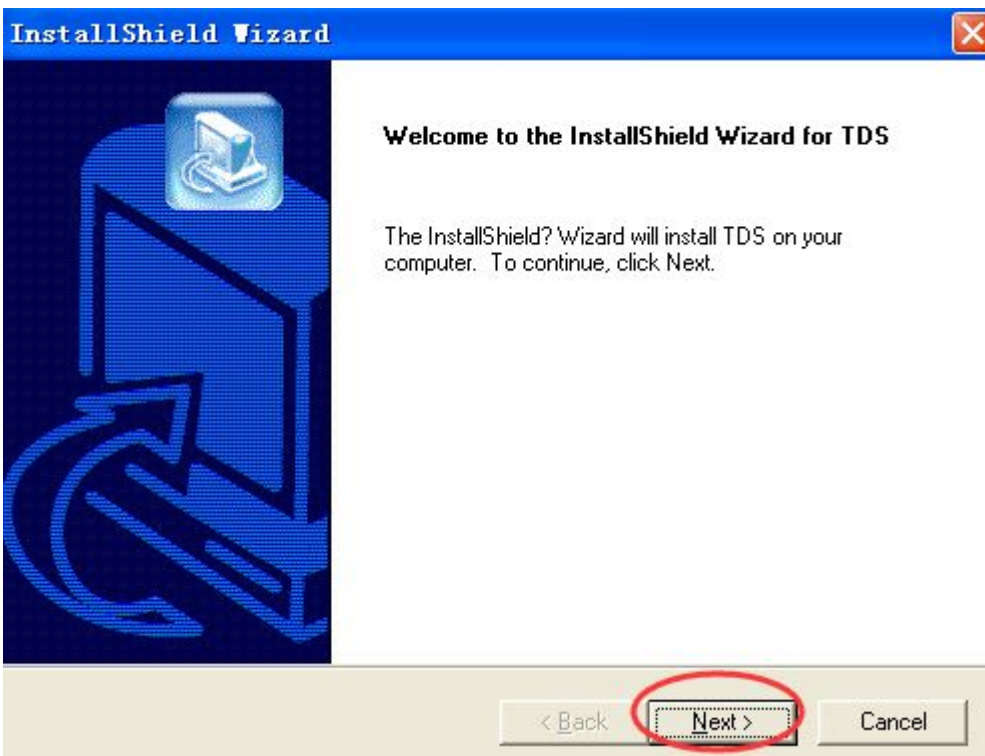
1: 打开安装程序文件夹，双击 Setup



2: 出现正在安装对话框;



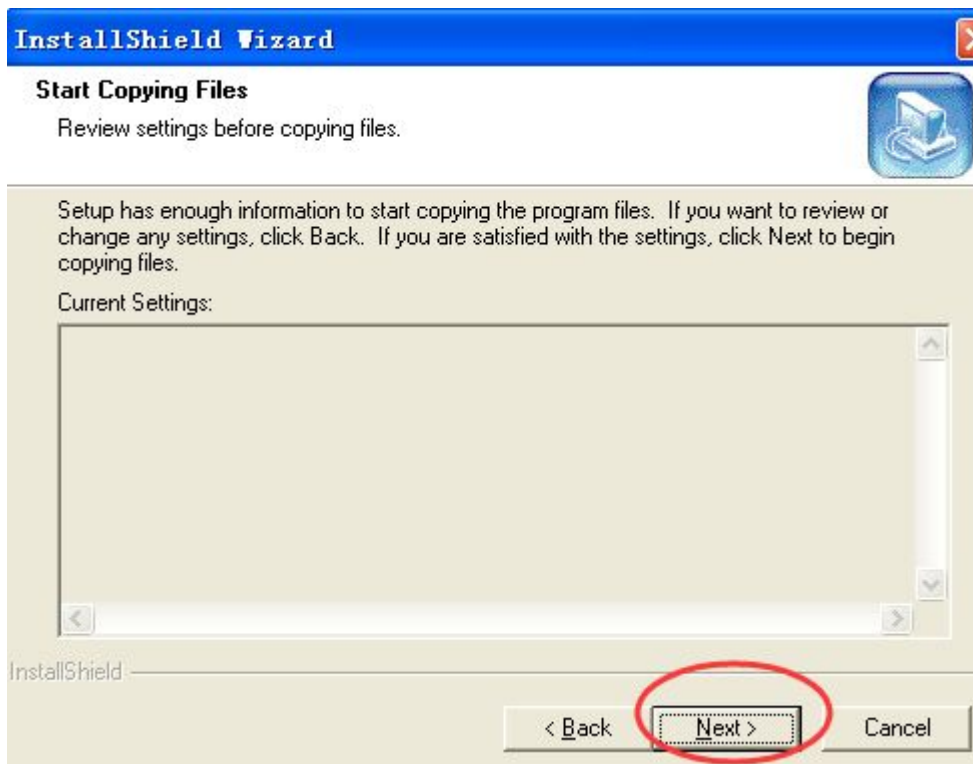
3: 然后点击 Next;



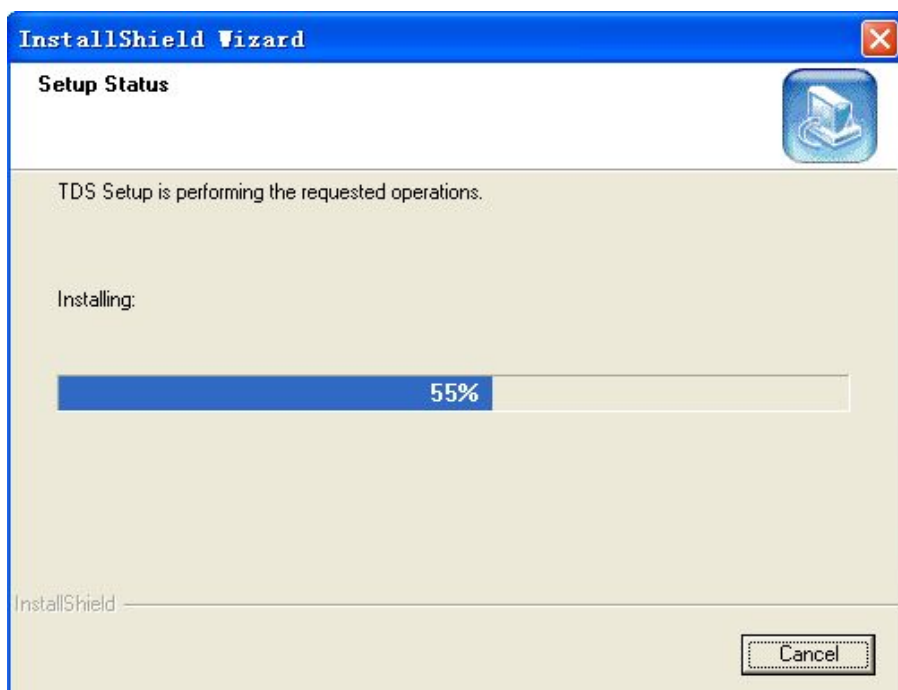
4: 再一次点击 Next (也可点击 Browse 更改路径)



5: 选择好路径后点击 Next;



6: 出现正在安装对话框;



7: 点击完成 Finish 即可。

